

**URJ BIENNIAL 2019**  
DECEMBER 11 - 15 • CHICAGO, IL



# An Agenda for Reform: Based on the 2018 Survey of Canadian Jews

Robert Brym  
SD Clark Professor of Sociology  
University of Toronto

# Today's agenda

- **The survey**
- **The religious context**
- **The social context**
- **The challenges**
  - **Synagogue membership**
  - **Day school attendance**
  - **Israel**



# The survey



# Survey sample by city

City	Respondents	Percent of Canadian Jewish population
Montreal	638	23
Toronto	1,135	48
Winnipeg	361	4
Vancouver	201	7
Total	2,335	82



# Survey sample by denomination

Name	Including	Percent
Traditional	Hasidic, Orthodox, Modern Orthodox	19
Conservative	Conservative	27
Liberal	Reform, Reconstructionist, Humanist	22
Nondenominational	None, other	33
Total		100



# The religious context



**URJ BIENNIAL 2019**  
DECEMBER 11 - 15 • CHICAGO, IL

# “To you personally, is being Jewish mainly a matter of...?” by denomination (in percent)

	Traditional	Conservative	Liberal
Culture	8	22	28
Ancestry/descent	8	9	13
Both of the above	3	6	13
Religion	28	10	6
Religion & ancestry/descent	7	7	7
Religion, culture & ancestry/descent	41	43	32
Other	5	3	1
Total	100	100	100



# Indicators of religiosity by denomination (in percent)

	<b>Traditional</b>	<b>Conservative</b>	<b>Liberal</b>
<b>Belief in God/universal spirit</b>	<b>90</b>	<b>71</b>	<b>55</b>
<b>Synagogue member</b>	<b>82</b>	<b>66</b>	<b>56</b>
<b>Attends services at least weekly</b>	<b>50</b>	<b>11</b>	<b>5</b>
<b>Never attends services</b>	<b>6</b>	<b>16</b>	<b>29</b>





# The social context



**URJ BIENNIAL 2019**  
DECEMBER 11 - 15 • CHICAGO, IL

# Assimilation indicators, Canadian and American Jews (in percent)

	Canada	USA	Difference
Ever visited Israel	79	43	36
Spouse's religion Jewish	77	50	27
Synagogue member	58	31	27
Donation to Jewish cause past yr	80	56	24
Attended full-time Jewish school	43	23	20
Being Jewish "very important"	64	46	18
Average			25



# “How interested are you in becoming more connected to the local Jewish community?”

## by current level of connectedness (in percent)

		Current connectedness			
		Very	Somewhat	Not very	Not at all
Interest in being more connected					
Very	20	35	11	10	8
Somewhat	38	34	46	36	17
Not very	23	14	30	42	29
Not at all	12	9	8	11	45
Depends/don't know	5	8	4	1	2
Total	100	100	100	100	100



# “How interested are you in becoming more connected to the local Jewish community?”

## by current level of connectedness (in percent)

		Current connectedness			
		Very	Somewhat	Not very	Not at all
Interest in being more connected					
Very	20	35	11	10	8
Somewhat	38	34	46	36	17
Not very	23	14	30	42	29
Not at all	12	9	8	11	45
Depends/don't know	5	8	4	1	2
Total	100	100	100	100	100



# “How interested are you in becoming more connected to the local Jewish community?” by current level of connectedness, **Liberal only** (in percent)

		Current connectedness			
		Very	Somewhat	Not very	Not at all
Interest in being more connected					
Very	15	21	12	13	17
Somewhat	40	41	44	34	17
Not very	33	25	33	44	33
Not at all	8	7	6	7	33
Depends/don't know	6	6	5	2	0
Total	100	100	100	100	100

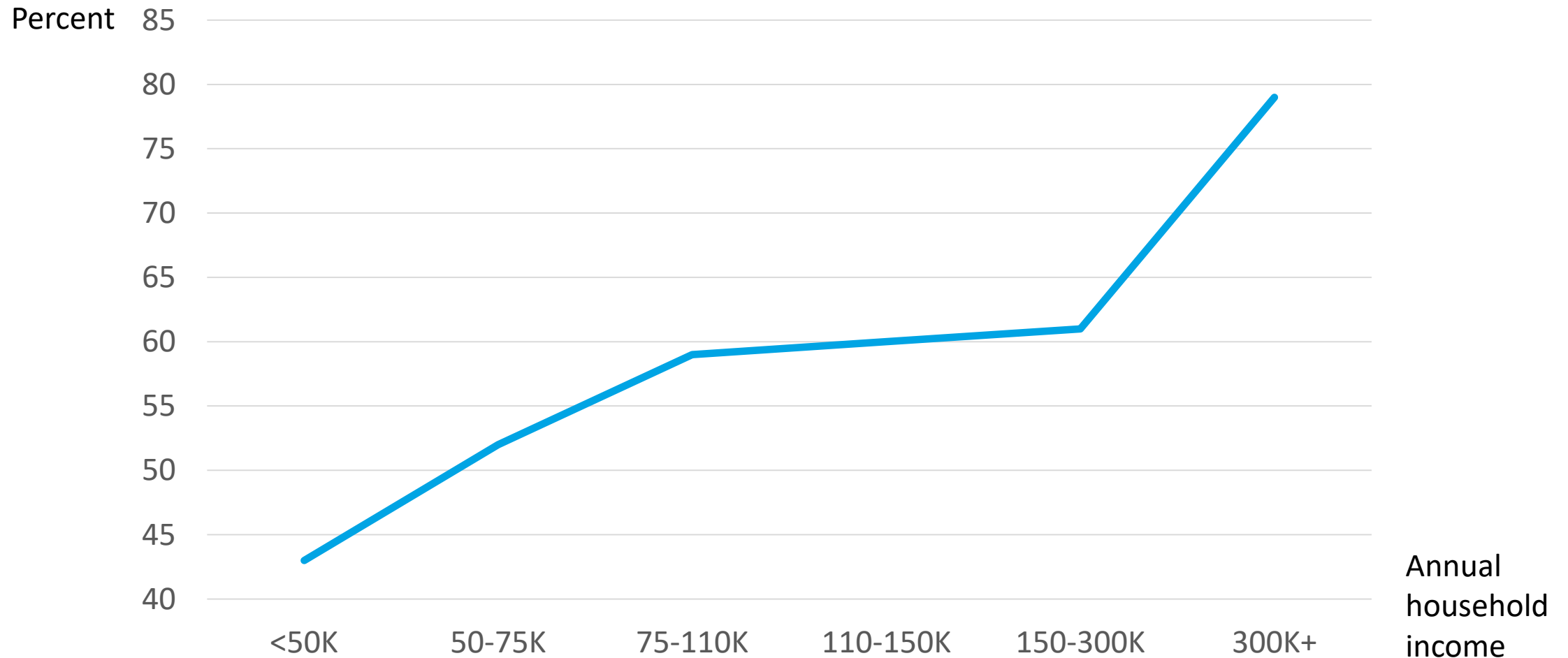


# Challenges



**URJ BIENNIAL 2019**  
DECEMBER 11 - 15 • CHICAGO, IL

# Synagogue membership by annual household income



# How tuition influences day school enrolment in Toronto

A 36% tuition *cut* in 2017 resulted in a 33% *rise* in grade 9 enrolment in 2018.

**TannenbaumCHAT**

A 42% tuition *rise* between 2000 and 2019 resulted in a 27% enrolment *drop*.

**Grades 1-8**

Tuition has a strong effect on day school enrolment.

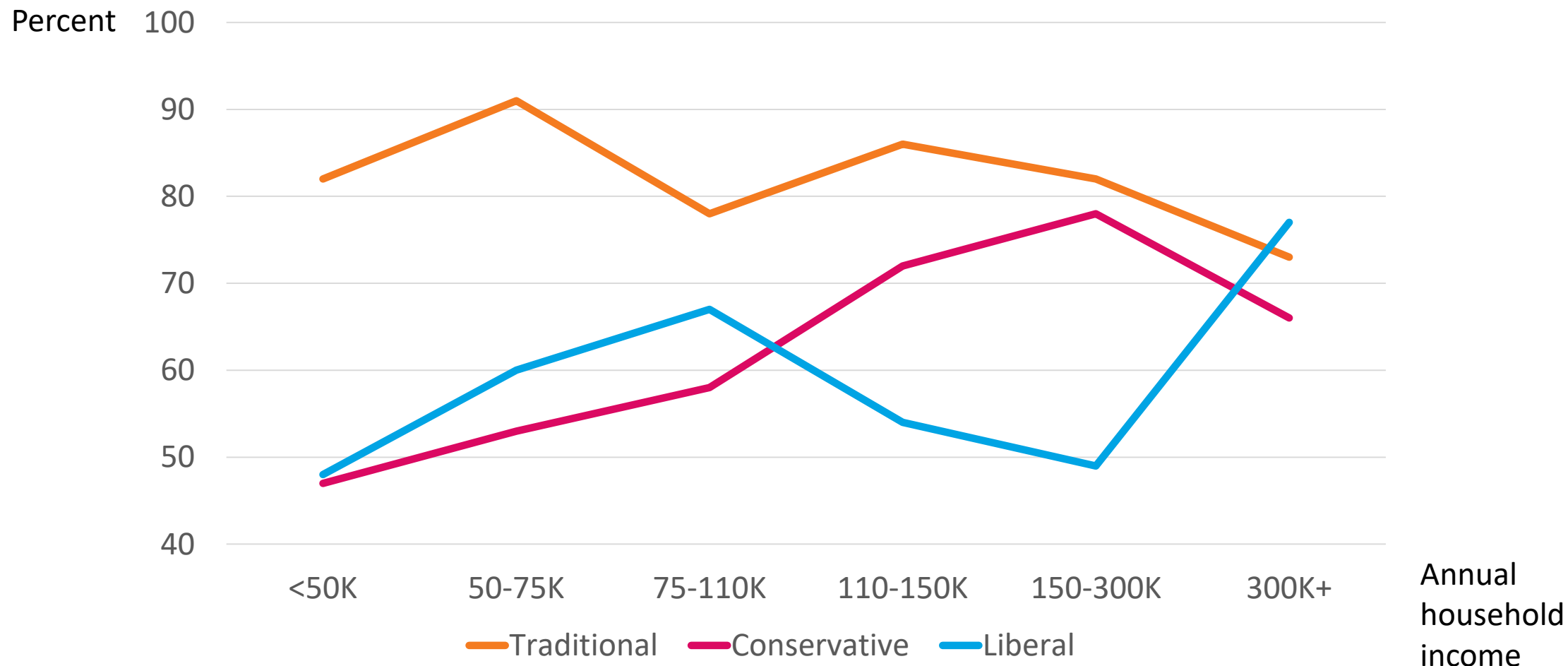
**Conclusion**

Source: UJA Federation of Greater Toronto. 2019. *The Generations Trust*, Toronto, pp. 8, 11.  
Note: Figures control for inflation.

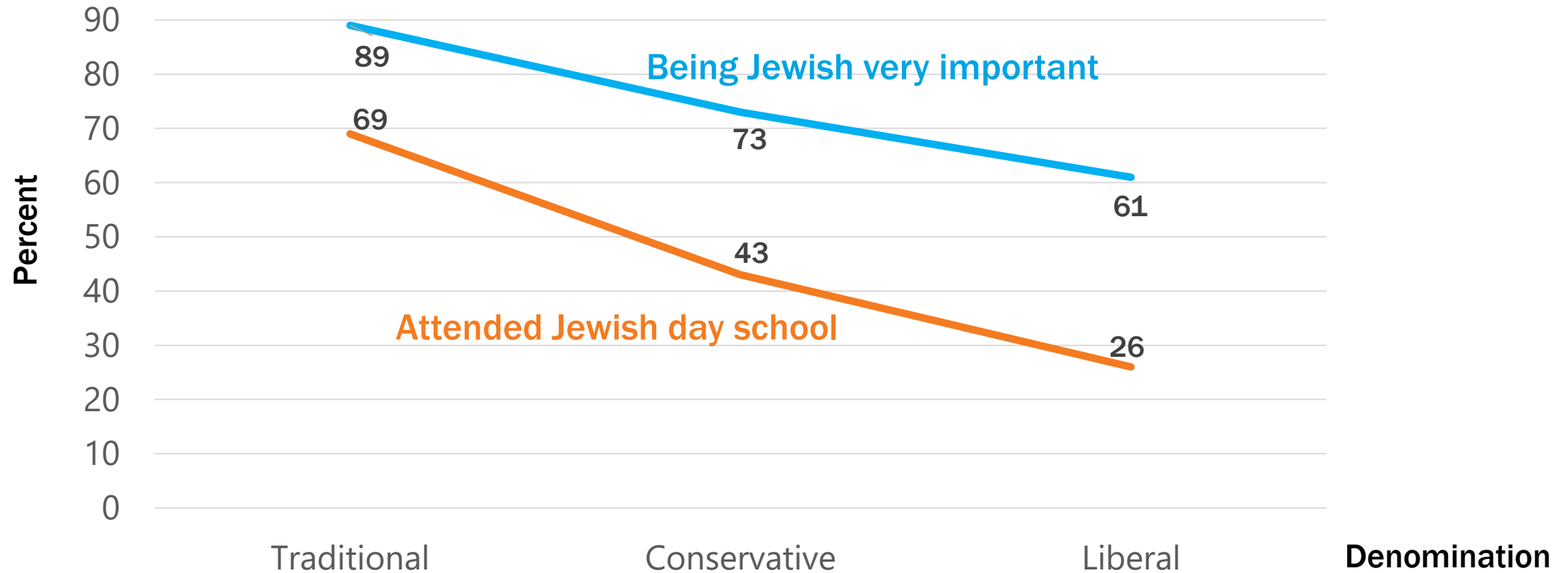




# Synagogue membership by annual household income



# Being Jewish “very important in my life” and “attended Jewish day school” by denomination (in percent)

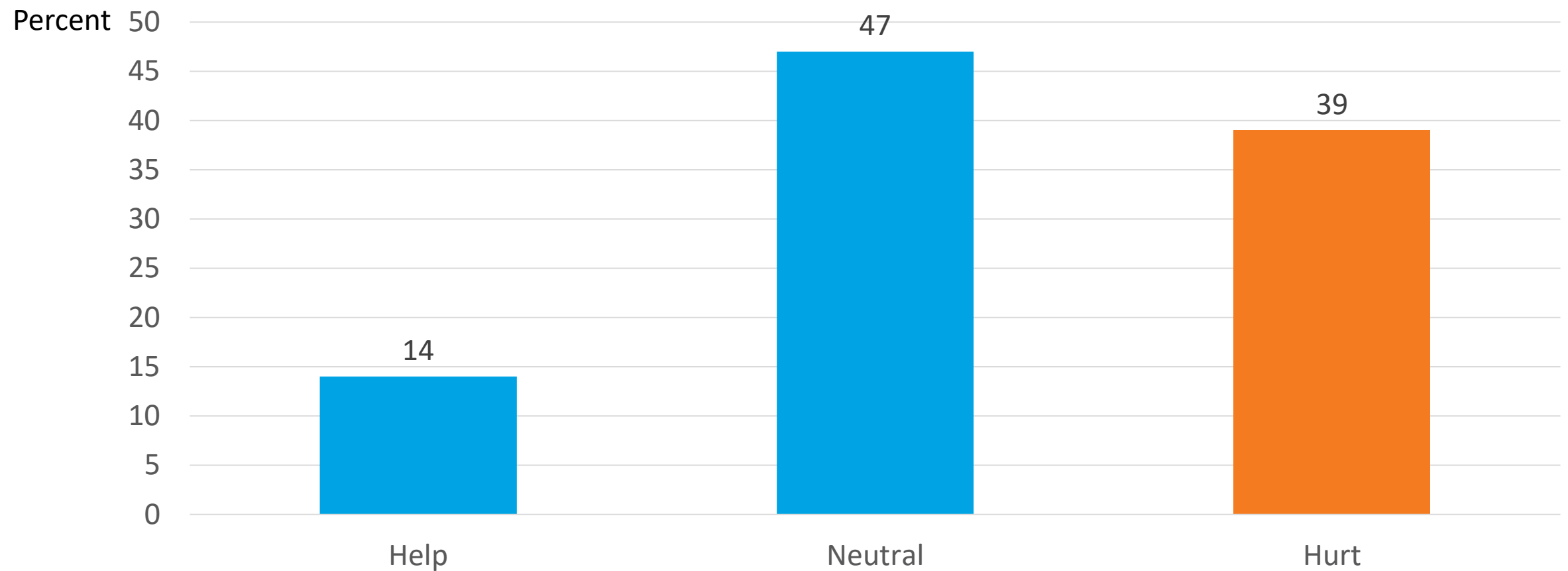


# The effect of Jewish day schools on community cohesion (in percent)

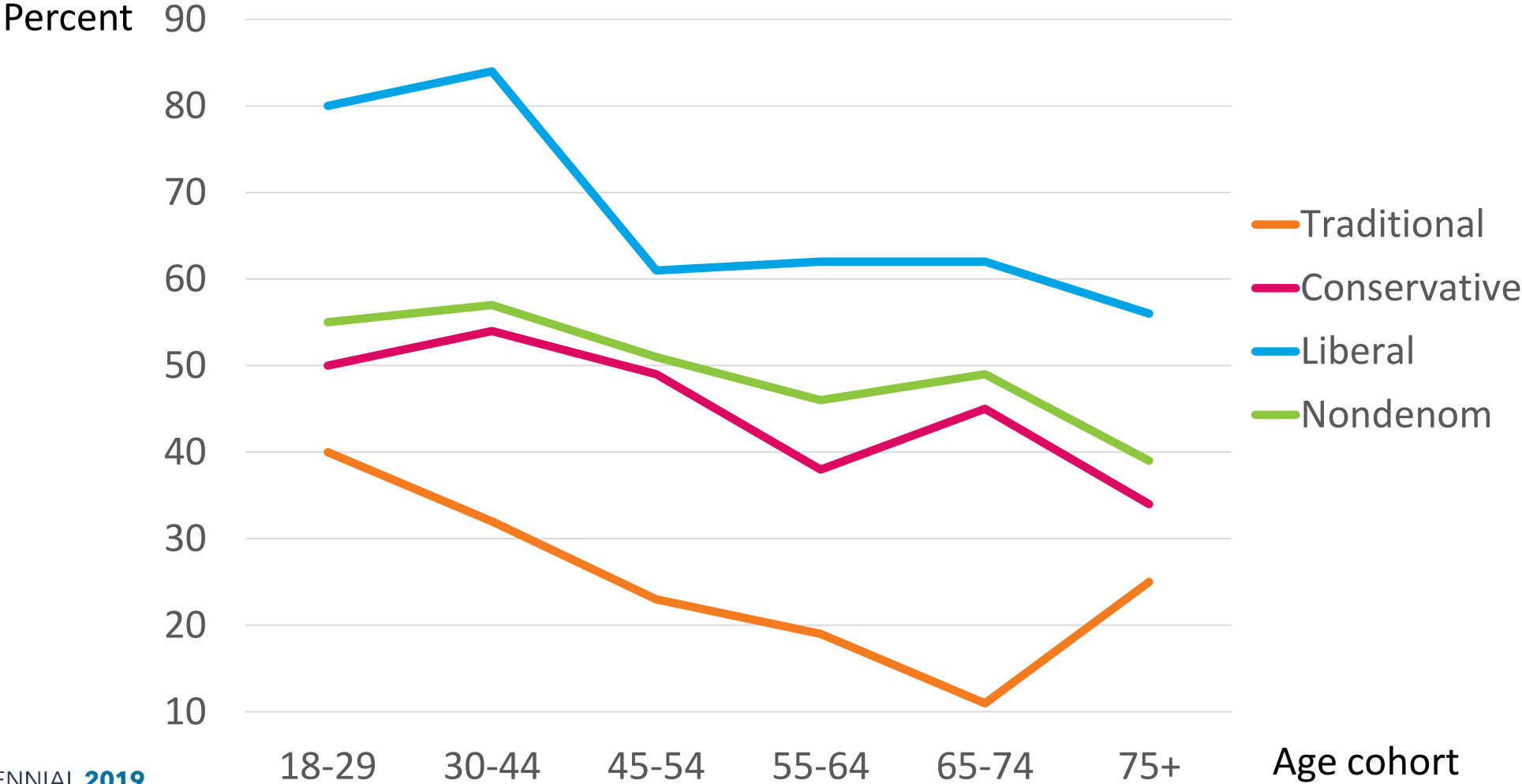
	Years in school			Difference
	0	1-8	9	
How important are the following in what being Jewish means to you? (percent “very important”)				
Being part of a Jewish community	34	41	58	24
Celebrating Jewish holidays with family	58	63	67	9
Caring about Israel	40	42	49	9
Synagogue membership	55	54	66	11
Christmas/New Year’s tree	13	13	5	8
Spouse’s/partner’s religion non-Jewish	23	28	16	7



# “Do West Bank settlements help or hurt Israel’s security?”

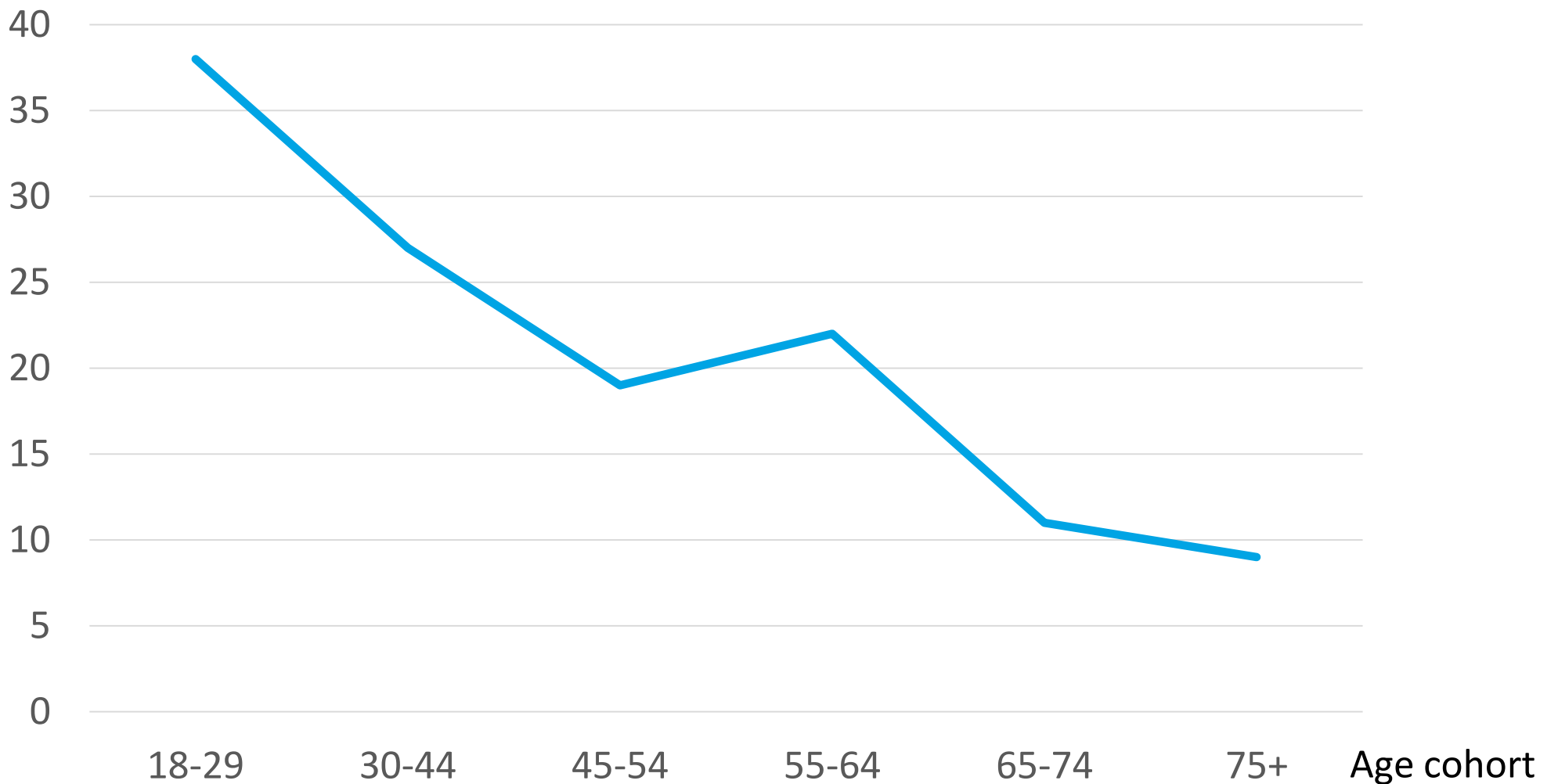


# Percent “hurt” by denomination and age cohort



# Personal experience of religious discrimination past 5 yrs, by age cohort, in percent

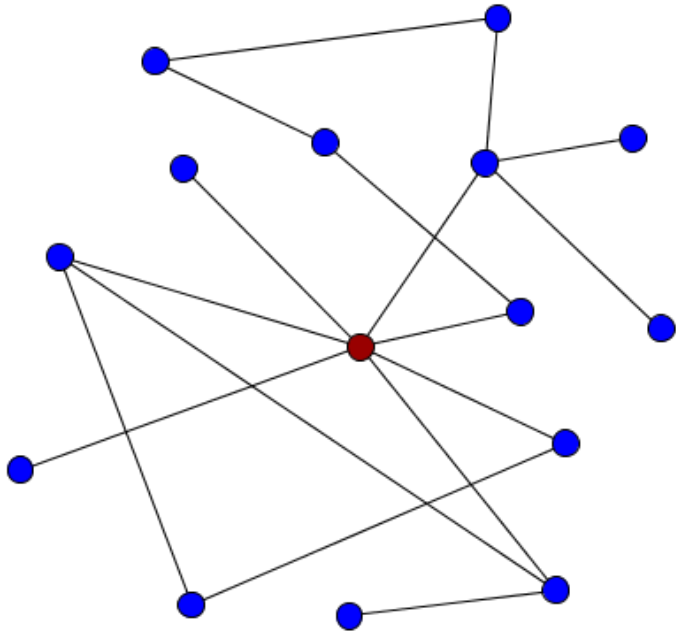
Percent personally experienced religious discrimination



# Conclusion



# Three challenges



Overcoming high cost



Political & moral appeal



Campus alternative





# CONTINUE THE CONVERSATION...

Find this session in the Biennial app on your mobile device:

- Rate this session, 1 to 5 stars
- Click through to The Tent to continue the conversation.

